

Deleting Pools From Case IH Pro 700

When connecting ISOBUS products to a virtual terminal, there is a process called Uploading Pools that takes place.

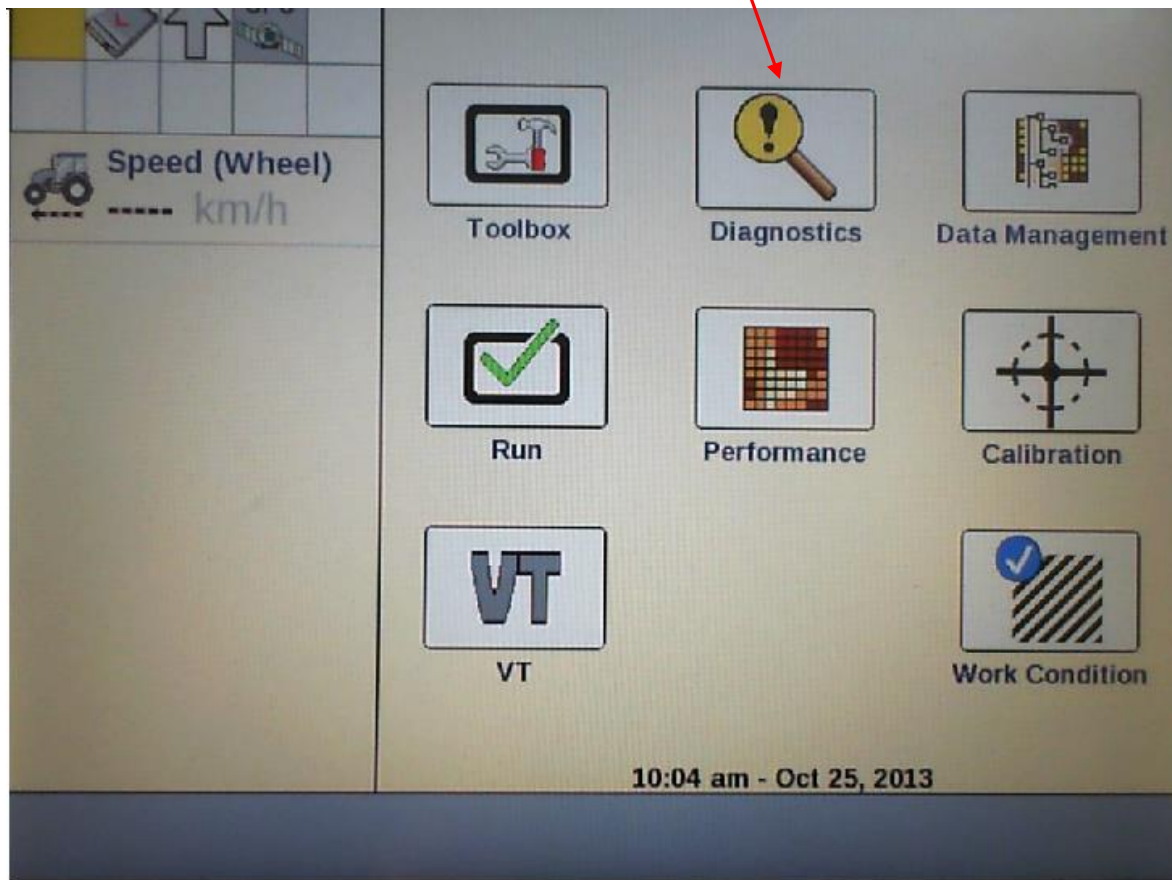
A pool is essentially the software on each ECU. Each ISO ECU that is connected uploads its own pool.

On the Pro 700, when multiple ECU's are connected, sometimes errors occur on the upload of our Agrtron pool. The error might display:

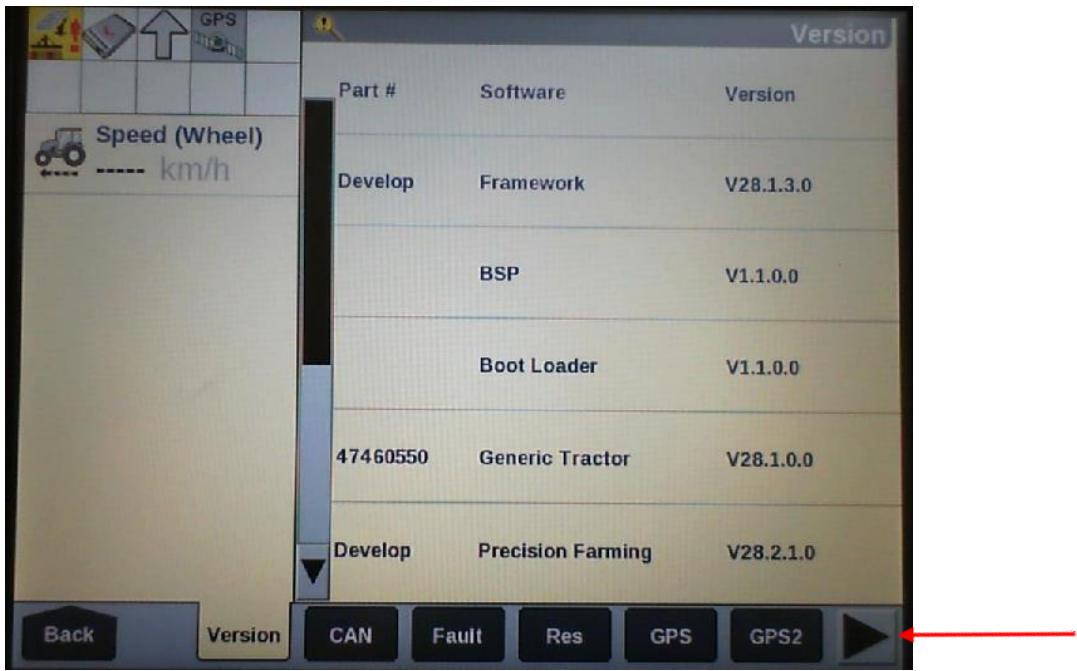
- Parser Error
- Pool Validation Error
- Delete Notice

If any of these errors are present upon powering on a PRO 700 with multiple ECU's trying to upload, these steps should help the pool upload.

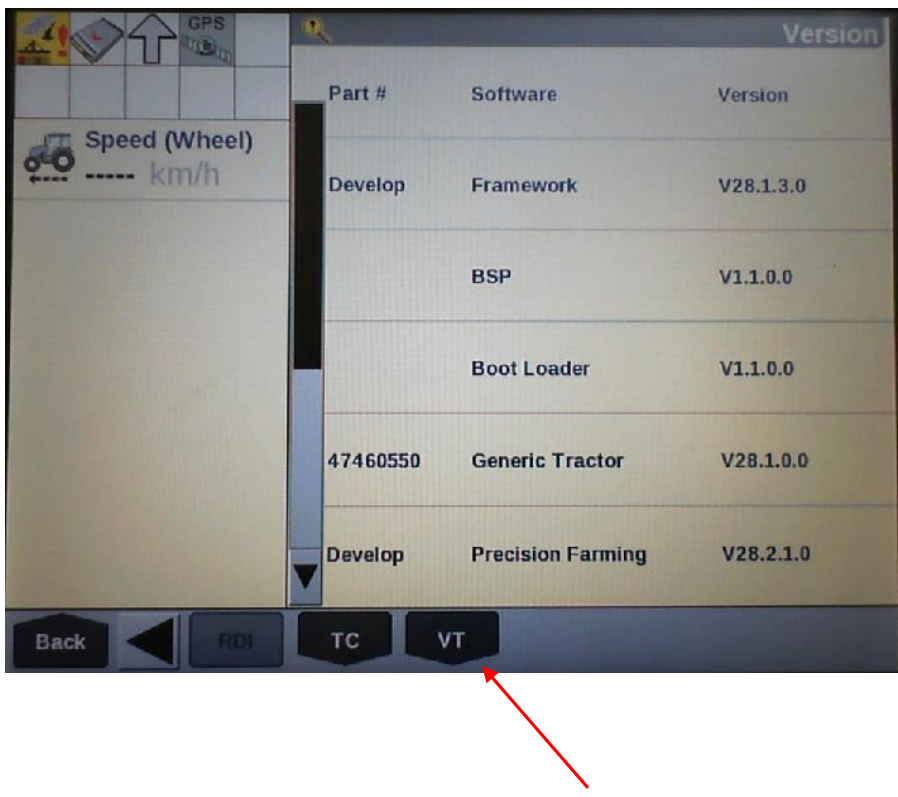
- 1.) From the Main Screen of the Pro 700 press the Diagnostics soft key.



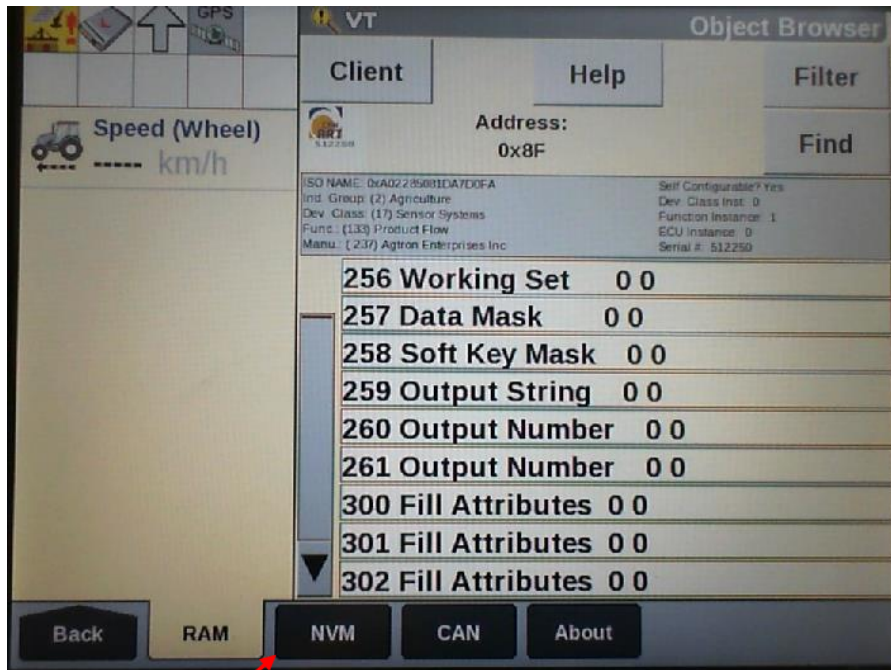
2.) On the next screen select the Arrow tab to bring up more options.



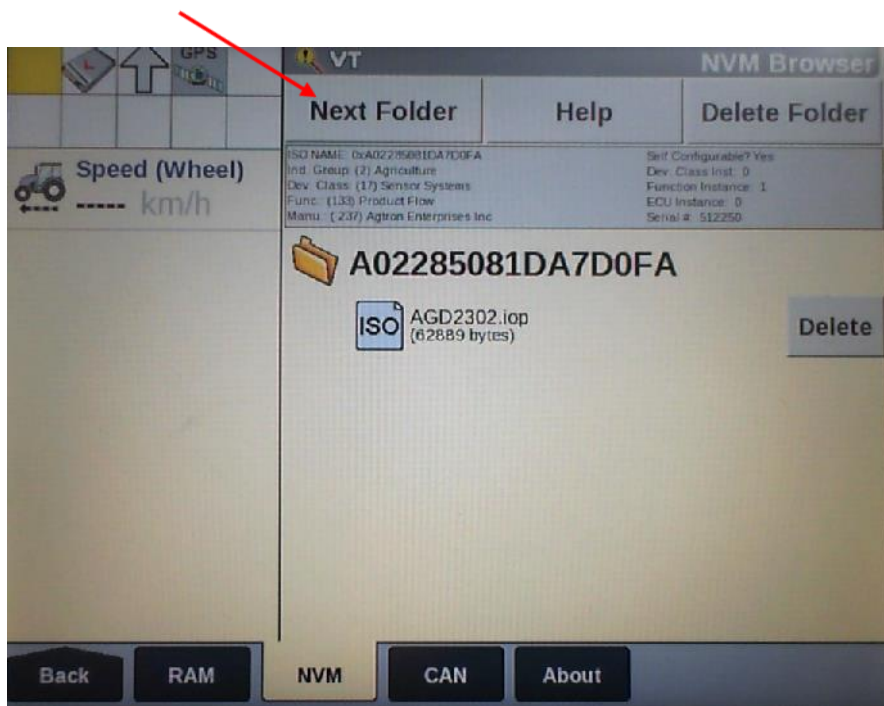
3.) Select the VT tab.



4.) Select the NVM tab. NVM stands for Non-Volatile Memory



5.) Once in the NVM Browser, press the Next Folder soft key until you see a "Pool" that starts with AGD. In this case it is AGD2302. Where AGD2 means it's a CAN-ART, and 302 stands for software version 3.02. Delete the pool by pressing the Delete soft key.



- 6.) Once these steps have been completed. Power down the tractor. Unplug the CAN-ART from the Bus.
- 7.) Leaving the CAN-ART unplugged, power the system back on.
- 8.) Wait for system to power on completely, and all other ECU's have finished uploading, plug the CAN-ART back in. Sometimes when more than one ECU are uploading at the same time errors happen. Steps 6-8 should only have to be done once. Once the Agtron pool loads once, it is usually fine after that.

Any questions or concerns you can email me @ kris.kennedy@agtron.com